

# COVIDWATCHEU-NPA

## **Clinical Aspects thematic project (A) "Local, national and transnational public health responses and comparative clinical data across the NPA region"**

Prof. Liam Glynn  
Professor of General Practice,  
School of Medicine,  
University of Limerick



Northern Periphery and  
Arctic Programme  
2014-2020



EUROPEAN UNION

Investing in your future  
European Regional Development Fund





## **Lead Partner:**

School of Medicine, University of Limerick, Ireland

### **■Partners:**

- University of Tromsø, The Arctic University of Norway Norwegian Institute of Public Health
- Akureyri Hospital, Iceland
- Lakehead University, Northern Ontario School of Medicine, Canada

### **■Associated partners:**

- University of Eastern Finland, Finland
- Ulster University, Northern Ireland, UK
- NHS Highland, Scotland, UK
- University of New England, Maine, USA

# Collaboration

- Umbrella Group
- Associate Partner with:
  - Technology Theme Project
  - Economic Theme Project
  - Emerging Theme Project



# COVIDWATCH-EU-NPA

- Aims:
- COVIDWATCH-EU-NPA REPORT: To provide regularly updated comparative data with clinical interpretation between those NPA and non-NPA regions on a country by country basis
- COVIDWATCH-EU-NPA RESPONSE: To retrospectively map the public health responses and interventions used by different NPA regions and countries in the first wave of the COVID-19 and explore how these measures have influenced the individual pandemic curves of these countries

# COVIDWATCH-EU-NPA REPORT WEBSITE



Northern Periphery and  
Arctic Programme  
2014-2020

COVIDWATCH-EU-NPA

<https://covidwatcheu-npa.shinyapps.io/covid/>

[Home](#) | [Countries](#) | [Data](#) | [Case Fatality %](#) |

## Select Dates:

2020-01-2: to 2020-11-0:

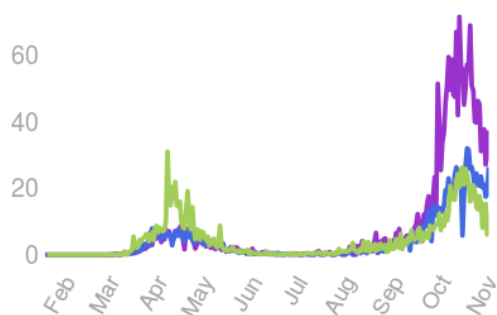
## Pick countries:

- ☒ Northern Ireland
- ☒ Scotland
- ☐ Faroe Islands
- ☐ Greenland
- ☐ Finland
- ☐ Iceland
- ☒ Ireland
- ☐ Norway
- ☐ Sweden

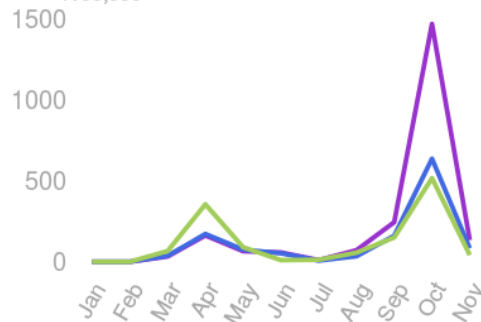
## Legend

- Ireland
- Scotland
- NorthernIreland

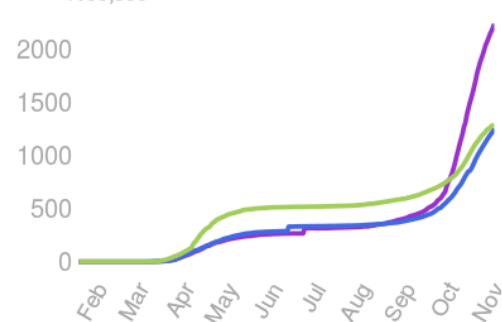
New Daily Cases  
/100,000



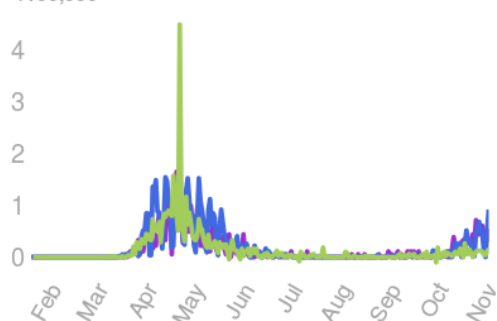
Monthly New Cases  
/100,000



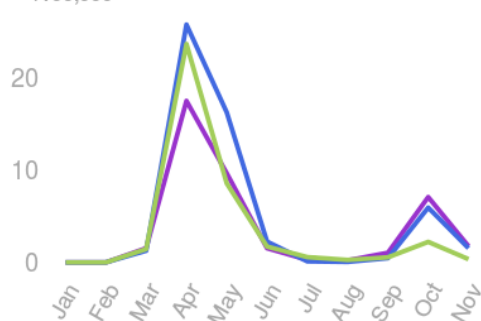
Total Cases  
/100,000



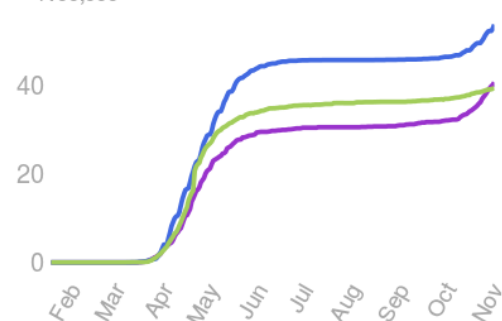
New Daily Deaths  
/100,000



Monthly New Deaths  
/100,000



Total Deaths  
/100,000





Liam



Northern Periphery and  
Arctic Programme  
2014-2020

## COVIDWATCH-NPA-EU

[Home](#) | [Countries](#) | [Data](#)

COVIDWATCH-NPA-EU is an international project aiming to summarise lessons learnt from the COVID-19 response of countries at the Northern edge of Europe.

This work is supported by the [NPA COVID-19 Response Group](#)

You can see which countries are involved in this initiative (and short summaries of each country's response) with the 'Countries' tab above.

Up to date data from all countries can be graphed using the 'Data' tab.

This site will be added to each week as more data is gathered. This will allow you to pick through the various elements of each country's response. (how Cases and Deaths are reported, Public Health interventions etc.)

Edit



### Covidwatcheu\_npa

Create @Username · Health & Wellness Website

Edit Contact Us

[Home](#)[Services](#)[Reviews](#)[More](#) ▼

Promote

View as Visitor



Create Post



Photo/Video



Get Messages



Feeling/Activity



# Dissemination : 600,000+

- **FACEBOOK** Covidwatcheu\_npa
- **Twitter** #COVIDWATCHEU\_NPA
- **Website** <https://covidwatcheu-npa.shinyapps.io/covid/>

Follow / Like / Share / Retweet Please

- Reports and Conferences

# Timelines and Progress

## ■ Month 4 completed

- Management Group setup (completed)
- Staff Recruitment and Training (completed)
- Weekly management meetings (16 completed)
- Monthly Consortium meetings (4 completed)
- Monthly Clinical Forum and interpretation (4 completed)
- Interim Report drafted and circulated
- COVIDWATCHEU-NPA Response document (Final Draft)
- COVIDWATCHEU-NPA Report Dissemination
- Dissemination via CORE group?
- EMS Final Report (Ongoing)
- Final Dissemination Event

- Address to EU Parliament Working Group on Cross-Border Collaboration Thursday 25<sup>th</sup> March 8.30am





UNIVERSITY of LIMERICK  
OLLSCOIL LUIMNIGH



## Contact details:

Prof. Liam Glynn  
GP, Ballyvaughan, Co Clare,  
Professor of General Practice,  
School of Medicine,  
University of Limerick

Follow / Like / Share / Retweet

**FACEBOOK** Covidwatcheu\_npa

**Twitter** #COVIDWATCHEU\_NPA

**Website** <https://covidwatcheu-npa.shinyapps.io/covid/>